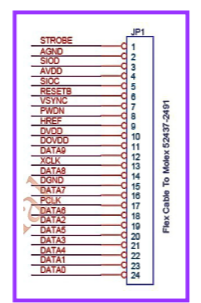
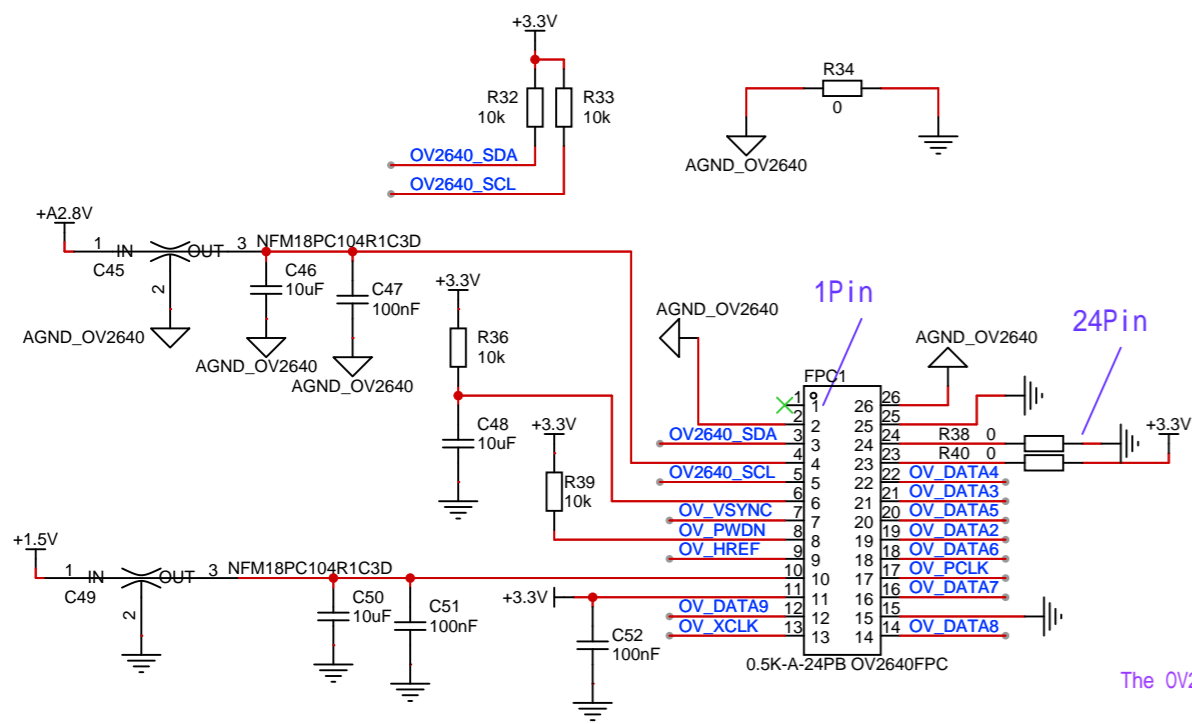


Project: T-CameraPlus-S3	Page: power	Ver: V1.2
	Company: LILYGO	License: GPL 3.0
Data: 2023-08-18 LastEditTime: 2025-04-17		



The OV2640 pin tag reference diagram

Table 5. SD_MODE Control

SD_MODE STATUS	SELECTED CHANNEL
High	Left
Pullup through R _{pullup}	Right (Lut2 = right)
Pullup through R _{pullup}	Shutdown
Low	Shutdown

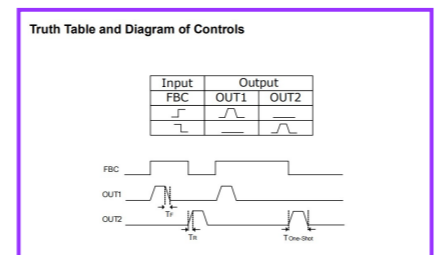
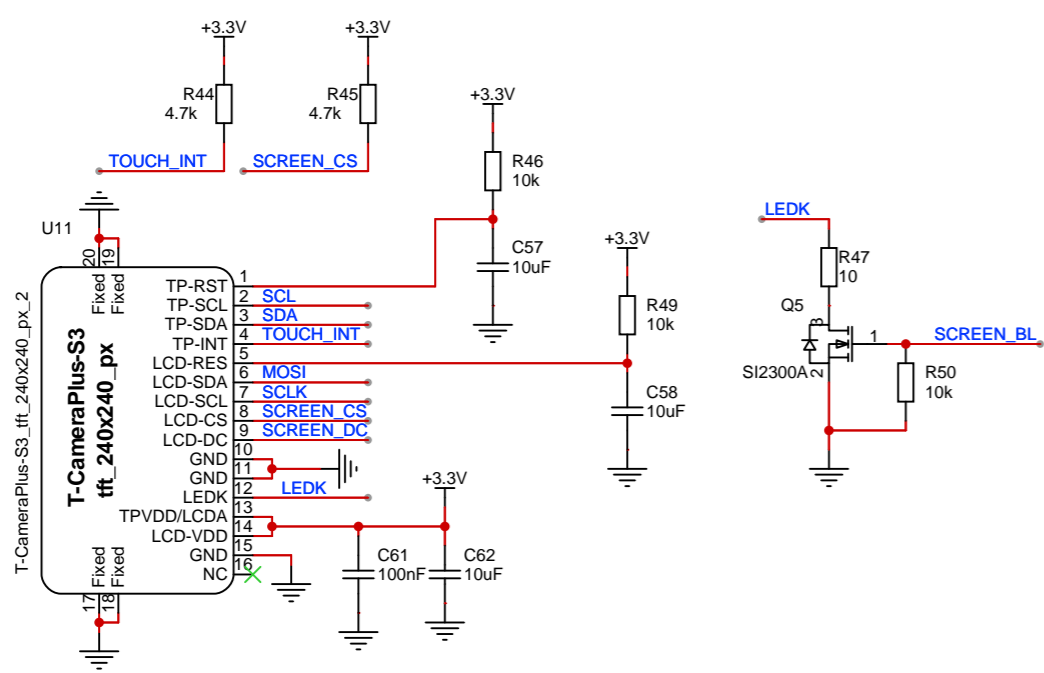
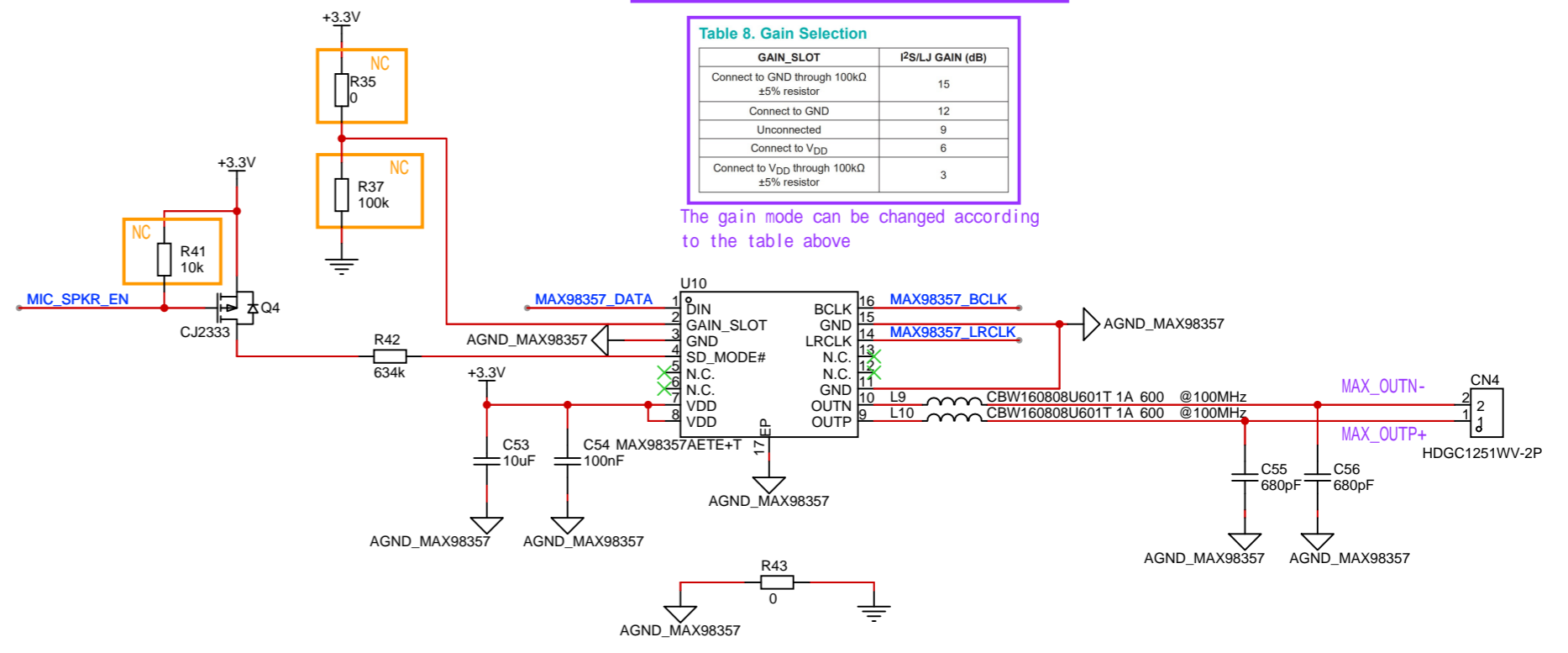
Table 6. Examples of SD_MODE Pullup Resistor Values

LOGIC VOLTAGE LEVEL (V _{DD}) (V)	R _{PULLUP} (kΩ)	R _{PULLUP} (Ω)
1.8	69.9	300
3.3	210.2	634

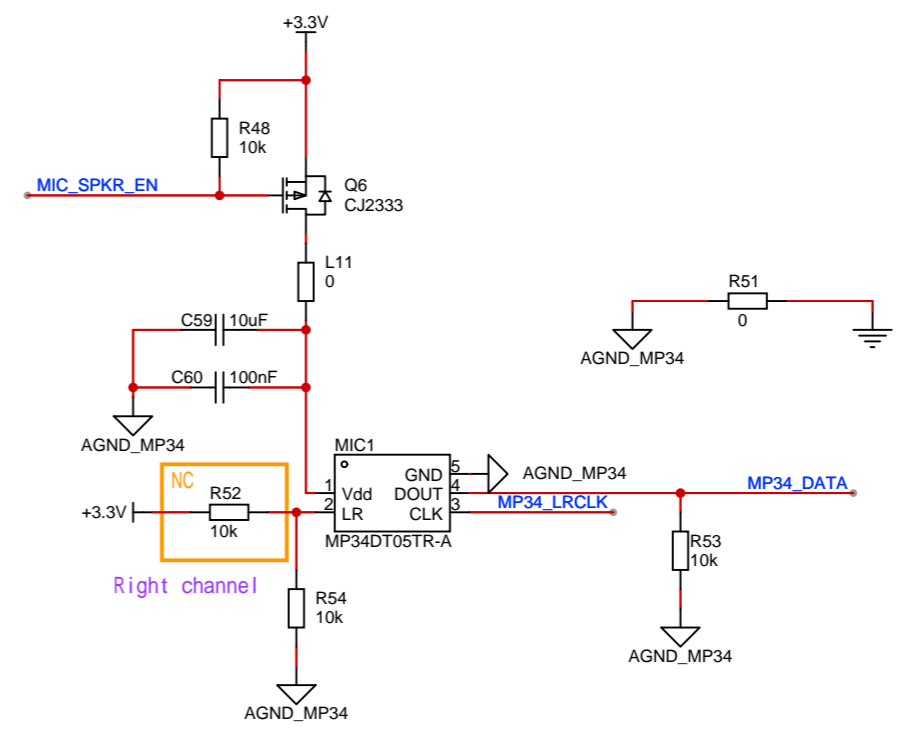
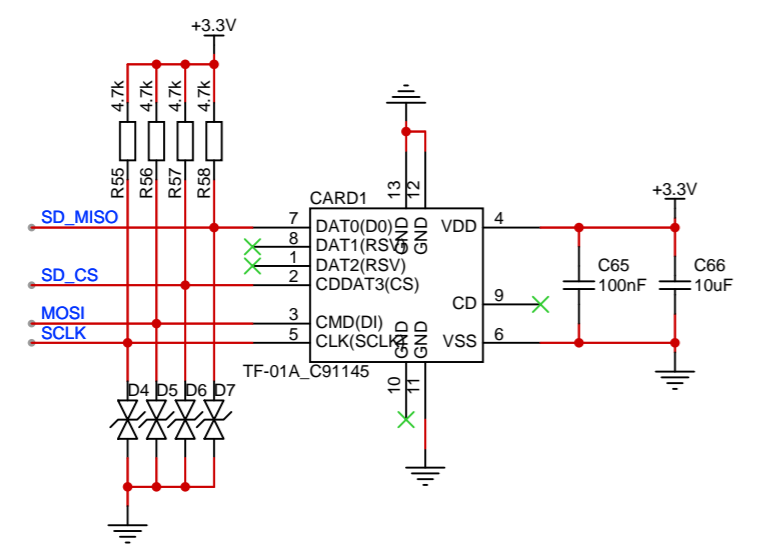
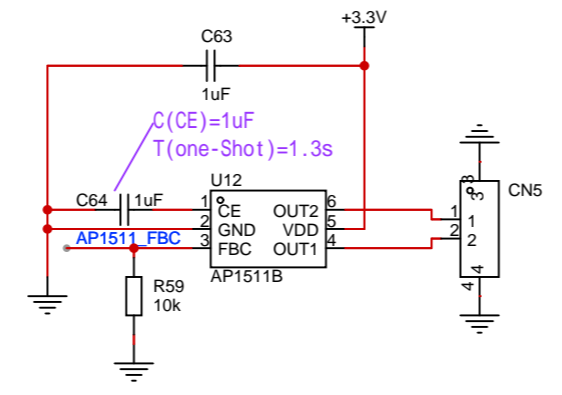
Table 8. Gain Selection

GAIN_SLOT	PS/LJ GAIN (dB)
Connect to GND through 100kΩ ±5% resistor	15
Connect to GND	12
Unconnected	9
Connect to V _{DD}	6
Connect to V _{DD} through 100kΩ ±5% resistor	3

The gain mode can be changed according to the table above



The period of TOne-Shot is determined by the external capacitor connected on CE pin. It can be estimated from the equation:
 $T(\text{one-Shot}) = 1.3 \cdot 10^6 \cdot C(\text{CE})$ (second)



Project: T-CameraPlus-S3	Page: other	Ver: V1.2
LILYGO®	Company: LILYGO	License: GPL 3.0
Data: 2023-08-18 LastEditTime: 2025-04-17		